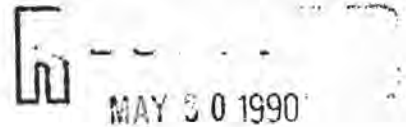


United States Department of the Interior  
National Park Service



NATIONAL REGISTER OF HISTORIC PLACES  
REGISTRATION FORM

NATIONAL  
REGISTER

=====

1. Name of Property

=====

historic name: Charles L. Beatty House

other name/site number: Kendrick Building

=====

2. Location

=====

street & number: 2320 Capitol Avenue

not for publication: N/A

city/town: Cheyenne

vicinity: N/A

state: Wyoming code: WY county: Laramie code: 021 zip code: 82002

=====

3. Classification

=====

Ownership of Property: public-State

Category of Property: building

Number of Resources within Property:

Contributing	Noncontributing	
<u>2</u>	<u>0</u>	buildings
<u>0</u>	<u>0</u>	sites
<u>0</u>	<u>0</u>	structures
<u>0</u>	<u>0</u>	objects
<u>2</u>	<u>0</u>	Total

Number of contributing resources previously listed in the National Register: 0

Name of related multiple property listing: N/A

4. State/Federal Agency Certification

As the designated authority under the National Historic Preservation Act of 1986, as amended, I hereby certify that this  nomination  request for determination of eligibility meets the documentation standards for registering properties in the National Register of Historic Places and meets the procedural and professional requirements set forth in 36 CFR Part 60. In my opinion, the property  meets  does not meet the National Register Criteria.  See continuation sheet.

  
Signature of certifying official

5-23-90  
Date

SHPO  
State or Federal agency and bureau

In my opinion, the property  meets  does not meet the National Register criteria.  See continuation sheet.

Signature of commenting or other official

Date

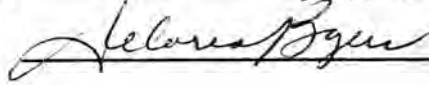
State or Federal agency and bureau

5. National Park Service Certification

I, hereby certify that this property is:

~~Entered in the~~  
National Register

- entered in the National Register  See continuation sheet.
- determined eligible for the National Register  See continuation sheet.
- determined not eligible for the National Register
- removed from the National Register
- other (explain): \_\_\_\_\_

 6/28/90

Signature of Keeper

Date of Action

6. Function or Use

Historic: DOMESTIC

Sub: single dwelling (residence)  
secondary structure (garage)

Current: GOVERNMENT

Sub: government office/gallery

=====  
7. Description  
=====

Architectural Classification:

Other: American Foursquare  
\_\_\_\_\_  
\_\_\_\_\_

Other Description: \_\_\_\_\_

Materials: foundation concrete                      roof asphalt  
                  walls        brick                      other wood porch and windows

Describe present and historic physical appearance. X See continuation sheet.

=====  
8. Statement of Significance  
=====

Certifying official has considered the significance of this property in relation to other properties: locally.

Applicable National Register Criteria: A and C

Criteria Considerations (Exceptions) : N/A

Areas of Significance:

ARCHITECTURE  
COMMUNITY PLANNING & DEVELOPMENT  
\_\_\_\_\_  
\_\_\_\_\_

Period(s) of Significance: 1916-1940 \_\_\_\_\_

Significant Dates : 1916 \_\_\_\_\_

Significant Person(s): N/A  
\_\_\_\_\_

Cultural Affiliation: N/A  
\_\_\_\_\_

Architect/Builder: Dubois, William Robert  
\_\_\_\_\_  
\_\_\_\_\_

State significance of property, and justify criteria, criteria considerations, and areas and periods of significance noted above. X See continuation sheet.

United States Department of the Interior  
National Park Service

NATIONAL REGISTER OF HISTORIC PLACES  
CONTINUATION SHEET

Section number 7 (Kendrick Building) Page # 1  
=====

Presently occupied by the Wyoming Council on the Arts, a State agency, the Kendrick Building is located within the complex of State office buildings surrounding the Wyoming State Capitol Building. The State Capitol itself is situated immediately to the north of the Kendrick Building; the Hathaway Office Building is to the south; and the Supreme Court Building is located to the east. Both the Capitol and the Supreme Court are landscaped with wide lawns, mature trees and occasional sculptures. In this setting, the residential Kendrick Building provides a contrast in scale: built after the State Capitol Building, it typifies Cheyenne's small-town ambience, in which family life, government and business activity continue to flourish next door to each other. To the west of the Kendrick Building is the Idelman Mansion, currently in use as a funeral home.

The Kendrick Building's immediate surroundings demonstrate some wear and tear from over twenty-five years of government use. The north and east yards, which separate the building from 24th Street and Capitol Avenue respectively, are grassed; there are a few shrubs next to the building. The lawns receive heavy pedestrian traffic, and the landscaping is minimal. There is a large tree in the front yard, immediately north of the main door and there are three street trees along 24th Street north and west of the building. The south and west portions of the lot are used for parking and are surfaced with asphalt. The State Legislature has appropriated money to rehabilitate the building and its garage and to upgrade the landscaping. The building will be used for offices, and the Arts Council proposes to use the garage for an art gallery and conference room.

The Kendrick Building is structurally sound. The exterior woodwork is in need of stripping/scraping and repainting. Some of the brick work needs replacing or pointing. Nevertheless, the building still gives much the same impression it did when it was constructed in about 1916. Its modified American Foursquare style, commanding front porch and porte-cochere, exaggerated eaves, and simple strong woodwork communicate a distinct sense of time and place.

The house is constructed of red brick, laid in common bond, with a header course every sixth course. A belt course of rusticated reddish stone runs immediately below the second story windows. The concrete foundation is faced with brick to grade.

The asymmetrically arranged double-hung sash windows contribute a great deal of character to the house. The windows have plain surrounds, with stone lug sills on the first story; on the second story, the belt course acts as sill for all but one of the windows. A soldier course of brick is laid above all the windows. Most of the second story windows are 12/1; most of the first story windows are 10/1; all the windows have decorative molded sashes.

United States Department of the Interior  
National Park Service

NATIONAL REGISTER OF HISTORIC PLACES  
CONTINUATION SHEET

Section number 7

(Kendrick Building) Page # 2

=====

A prominent characteristic of the house's hipped roof is the style of its eaves. They are exaggerated in width, culminating in a boxed cornice, and decorated with modillions. The roof is low-pitched and presently covered with black asphalt shingles. There are two interior chimneys, with simple stone caps, one centrally located on the ridge and one on the west elevation. The single dormer, centered on the facade, has a hipped roof, with exaggerated eaves and modillions, similar to the main roof. The dormer incorporates a band of three nine-light windows and is sided with brown wood square butt shingles.

The dominant feature of the facade is the enclosed front porch, which, because of its horizontal character, gives a Prairie feeling to the house. There is a band of eight tall 15-light windows on the facade; in addition, there are four 15-light windows on the north end of the porch and two (somewhat larger) similar windows on the north. Some of the porch windows are working casement windows. The windows are separated by classical-type squared columns with entablature, which divide the facade of the porch into three bays, two containing windows, the other the door and signage. The porch's hipped roof mirrors that of the house, with its low pitch, wide eaves, and modillions. The porch door, the main exterior door to the house, is located on the north end of the porch on the facade. It is a 15-light wood frame door, accessed by four concrete steps flanked by brick half-walls which are capped with stone. On either side of this door are wood panels currently used for building identification signs; early photos of the house indicate that these were once windows similar to the other porch windows.

The porch roof wraps around the house to the south elevation to form a porte-cochere. A ten-light wood door on the south end of the porch leads out to the porte-cochere by way of four concrete steps with a black metal pipe railing. The porte-cochere is supported by buttressed brick half walls with squared post columns.

Inside the porch, the brick wall of the house has the appearance of an outside wall. (Architect's original plans include the porch, however.) This wall has a three-bay window similar to the one on the south elevation. One other window, a 14/1 located south of the bay window, and a main entry door are in this wall as well. The heavy wood door rests on a stone threshold; within the door are four rectangular beveled glass windows arranged vertically side-by-side in the upper half of the door, above a locking rail.

United States Department of the Interior  
National Park Service

NATIONAL REGISTER OF HISTORIC PLACES  
CONTINUATION SHEET

Section number 7

(Kendrick Building) Page # 3

=====

There are two doors on the south elevation, the door between the porte-cochere and the porch, and another ground-level panelled wood door with a large window. Between the two doors is a canted bay window with an 8/1 window flanked by two 12/1 windows. The bay window is covered by a narrow hipped hood with a boxed cornice and small modillions; the hood is roofed with black asphalt shingles. There are two second-story windows on the south elevation, both 12/1, a shorter 10/1 main-floor window near the west edge of the wall, and a 12/1 between-floor window, which opens into the interior stairwell, above the ground level door. There are also three two-light hopper basement windows on this elevation, one in the bay and two west of the panelled door. A small bulkhead-type opening is located in the base of the west portion of the bay window; this may have opened into a coal chute at one time; it is now covered with a locked metal sheet, and the interior opening has been walled off.

There is a small enclosed brick porch on the west elevation, accessed by five concrete steps leading to a wood door which faces south and is similar in appearance to the panelled door in the south elevation. There are two small windows in the west wall of the porch, both 10/1. The roof of the porch forms a small deck with a simple low wood railing; a second story door leads to the deck. Also on the west elevation, and to the north of the porch, the wall projects out a distance of about eight inches for a width of about 11 feet. On the interior, this projection houses a built-in sideboard in what is currently the agency conference room. The extension is capped by a hipped roof which has an exaggerated eave similar to that above the bay window on the south elevation. There is one 14/1 window centrally located high on the wall of the extension; all other first-floor windows on the west elevation are level with this window and are of equal height, a height shorter than the second-story windows and the windows in the bay windows. Between the porch and the extension, there are two windows, a 10/1 and an 8/1; there is another 10/1 window in the main wall, north of the projection. There are three two-light hopper basement windows on the west elevation, two at the base of the projection, and one immediately north of the porch. On the second floor, there is a set of three 12/1 windows over the capped projection; there is one short 8/1 window, with its own lug sill, south of the set of three windows.

The north elevation is the most simple. There is a set of three windows, two 12/1 flanking one 10/1. Above these is a single second-story window, 10/1. To the east of this window is another between-story window, 12/1, which opens on the main interior stairwell. The north elevation contains two two-light hopper basement windows, located side-by-side, on the east portion of the wall.

United States Department of the Interior  
National Park Service

NATIONAL REGISTER OF HISTORIC PLACES  
CONTINUATION SHEET

Section number 7

(Kendrick Building) Page # 4

=====

To the west and south of the Kendrick Building is a garage built in the same style as the main house, with double-hung windows containing multiple lights in the upper sashes, and a hipped roof with wide eaves and decorative modillions. The garage is constructed of red brick, laid in common bond, with headers every sixth course. The foundation is faced with brick to grade. The overhang of the hipped roof is slightly narrower than that on the eaves of the main house, but because the garage is smaller, the visual effect is that both are at the same scale. There are no dormers on the garage, but there is one interior brick chimney on the south elevation.

The windows are double-hung sash windows, rectangular in shape, with stone lug sills and a soldier course of brick directly above each window. Some of the windows have traditional screens and some have metal security screens.

There is a panelled door containing one window in the center of the north elevation. The door rests on a stone threshold. There are four windows on the north elevation: west of the door are two tall 16/1 windows and east of the door are two shorter 10/1 windows.

On the south elevation there are three windows, one 16/1 located west of two 10/1 windows. The only window on the west elevation, located slightly south of center, is 16/1.

The garage door opening on the east elevation has been replaced with plywood sheets and a door; this treatment detracts from the character of the building.

A cinder block wall, about four feet high, has been constructed from the northwest corner of the garage, running directly north to the sidewalk.

United States Department of the Interior  
National Park Service

NATIONAL REGISTER OF HISTORIC PLACES  
CONTINUATION SHEET

Section number 8

(Kendrick Building) Page # 1

=====

The Kendrick Building (recently named for Wyoming Governor John Kendrick because it was built during his short two-year term in office) is significant under Criterion C because it embodies a distinctive style as designed by one of Wyoming's most important architects and under Criterion A because it is representative of one period of Cheyenne's development as a community. This American Foursquare residential structure, located across the street from the state Capitol building, retains its historic integrity and still communicates the sense of time and place it had when originally constructed. It is a superb example of William Dubois' architectural talent and it typifies Cheyenne's historic urban residential development in a number of ways.

William Robert Dubois, designer of the Kendrick Building, was a prolific architect who practiced in Cheyenne during the first four decades of the twentieth century. There were few other architects in the state during the first twenty years of his tenure, and he was responsible for designing virtually all the commercial buildings built in Cheyenne (and many others in the state and surrounding states) between 1900 and 1920. His architecture is well represented in Cheyenne's Capitol North and Downtown Historic Districts.

After training at the Chicago School of Architecture and working for architectural firms in Chicago and Albuquerque, Dubois first came to Cheyenne in 1901 as the supervising architect for the Carnegie Library. He was persuaded to stay by a local plumbing contractor, and proceeded to design over seventy commercial buildings in his new home town. He became the architect of choice for the State of Wyoming, and designed many buildings for the State's largest institutions, including the University of Wyoming (in Laramie), the Soldiers' and Sailors' Home (Buffalo), the Wyoming State Hospital (Evanston), the State Training School (Lander), the Wyoming Penitentiary (Rawlins), the Wyoming State Reformatory (Worland), as well as new wings for the State Capitol (Cheyenne). (See appendix for list of Dubois plans now filed at State Archives Department.) Dubois also designed Carnegie Public Libraries in at least four towns (Basin; Green River; Rock Springs; Eaton, Colorado), and numerous civic buildings, schools, stores and apartment buildings, as well as over one hundred houses in Cheyenne and its environs.

Dubois' style can best be described as eclectic renditions of the fashionable architectural forms of the day. His Carnegie library designs have been described as "neoclassic and modified Romanesque style," and his commercial buildings reflect early twentieth century trends, simpler in style than those built at the end of the nineteenth century, articulated with courses or panels, nearly always including glazed terracotta decoration. The style of some of his later commercial designs has been labeled Moderne. (Ittelson, Downtown, 3) The residences he designed are of a variety of styles: cottage, bungalow, Mission, Plains, even a home with an Arabian flair.



United States Department of the Interior  
National Park Service

NATIONAL REGISTER OF HISTORIC PLACES  
CONTINUATION SHEET

Section number 8

(Kendrick Building) Page # 2

=====

The Kendrick Building is significant under National Register Criterion C because it embodies the distinctive characteristics of a type and period of construction, the American Foursquare tradition. Furthermore, it is one of only two or three homes designed by Dubois in this style, and it is typical of this form, with two stories, a square shape, a hipped roof with broad eaves and a dormer, and functional (rather than symmetrical) window placement. (Kahn, 30) The porch is Dubois' unique touch: it has typical boxed-in and panelled posts with a low wall instead of a balustrade, but the porch roof extends beyond the south end of the house to cover the porte-cochere, giving the house a definite horizontal aspect, even a Prairie feeling.

The Kendrick Building is also typical of residential development in Cheyenne, particularly that which occurred after the mid to late 1800's. Cheyenne homes are characteristically modest, even when built for very wealthy clients, and styles reflect a long tradition of catalog homes and standardized house plans. This home, prominently sited across the street from the Capitol and built for a local banker (Charles L. Beatty), is neither pretentious nor spacious; its style is conventional. It is also a reminder of the accessibility of Wyoming government, for the Capitol is located within a residential area and not in the midst of the city's commercial district. Although now occupied by a state agency, the building retains its residential integrity as well as its prestigious setting: a reminder of Cheyenne's unassuming tastes and Wyoming's approachable politicians.

Cheyenne has grown in spurts since its inception, when it was founded as an outpost for the Union Pacific's transcontinental railroad. The boom/bust cycle has repeated itself through numerous successes and attendant failures, including a gold rush, incredible fortunes made by cattle barons, two world wars, and missile development at the adjoining Air Force Base.

During the period 1910-1920, when the Kendrick Building was designed and constructed, Cheyenne and the rest of the state were experiencing a major boom created by the convergence of several factors. Dry land farming, especially in the eastern part of Wyoming, was heavily promoted, and changes in homesteading laws in 1909 and 1912 gave further impetus to dry agricultural ventures. Laramie County led the state in dryfarming in 1914, with over half a million acres dedicated to the production of wheat, oats, barley, rye, flax, corn and potatoes in the Golden Prairie District southeast of Cheyenne. (Larson, 363)

United States Department of the Interior  
National Park Service

NATIONAL REGISTER OF HISTORIC PLACES  
CONTINUATION SHEET

Section number 8 (Kendrick Building) Page # 3  
=====

The advent of the First World War served to inject even more momentum into Wyoming's economic growth: farmers and ranchers pushed their yields to the limit in support of the allies, oil production doubled between 1916 and 1918, and coal development paralleled this growth. The advent of the automobile added to the demand for Wyoming oil -- and was the beginning of Cheyenne's position as a destination point for tourists: during the summer of 1920, over 40,000 people camped out north of town during the annual Frontier Days celebration! (Larson, 359 ff) Finally, growth in the federal government and technological changes demanded more government at the state level, and, as government grew, so did Cheyenne.

While a number of the homes in the Capitol North Historic District, and some in the Rainsford Historic District, were built during the first quarter of the twentieth century, the Kendrick Building is unique because of its prominent location within view of two of Dubois' major institutional projects, the Capitol additions and the Supreme Court Building. Furthermore, it is significant because it is a superior illustration of how the American Foursquare style was interpreted by an important local architect at the peak of his career. Finally, it is a particularly visible symbol of an important and formative period of rapid growth in Cheyenne's history.

The period of significance was derived from the year in which the Kendrick Building was designed as a residence for Charles L. Beatty, 1916. Beatty moved into Cheyenne from the rich farm country in eastern Laramie County to become a bank president: a personal hallmark of Cheyenne's prosperity at that time. Because of National Park Service rules, the period indicated on the form ends in 1940. The Kendrick Building continues to represent the work of Cheyenne's premier architect at the time it was built. It is a reminder of Wyoming's boom years prior to the Depression and a symbol of the lack of pretentiousness in Cheyenne housing stock. By its location, it still hints at the friendly relationship between Wyoming's government and her citizens.

=====

9. Major Bibliographical References

=====

X See continuation sheet.

Previous documentation on file (NPS):

- preliminary determination of individual listing (36 CFR 67) has been requested.
- previously listed in the National Register
- previously determined eligible by the National Register
- designated a National Historic Landmark
- recorded by Historic American Buildings Survey # \_\_\_\_\_
- recorded by Historic American Engineering Record # \_\_\_\_\_

Primary Location of Additional Data:

- State historic preservation office
- Other state agency
- Federal agency
- Local government
- University
- Other -- Specify Repository: \_\_\_\_\_

=====

10. Geographical Data

=====

Acreage of Property: 0.267 acre (11,616 sq. ft.)

UTM References: Zone Easting Northing    Zone Easting Northing

A 13 515150 4554020

See continuation sheet.

Verbal Boundary Description: X See continuation sheet.

Boundary Justification: X See continuation sheet.

=====

11. Form Prepared By

=====

Name/Title: Do Palma, Planning Consultant

Organization: N/A    Date: March 29, 1990

Street & Number: 210 W. 27th St.    Telephone: (307) 634-4065

City or Town: Cheyenne                      State: WY                      ZIP: 82001

United States Department of the Interior  
National Park Service

NATIONAL REGISTER OF HISTORIC PLACES  
CONTINUATION SHEET

Section number 9 (Kendrick Building) Page # 1  
=====

Deed and Abstract Records for Block 169, Original City of Cheyenne. Filed at the Office of the Clerk of Laramie County, County Building, Cheyenne, WY.

Dubois, William R., Architect. "Residence for Mr. Chas. L. Beatty, Cheyenne, Wyoming." House plans dated 1916. Filed at Wyoming State Archives, Museums and Historical Department, Barrett Building, Cheyenne, WY.

Dubois, William, R., Architect. Numerous building plans listed by and filed at Wyoming State Archives, Museums and Historical Department, Barrett Building, Cheyenne, WY.

Dubois, William R., III. Personal interview by Do Palma, March 27, 1990.

Feinberg, John D., and Ittelson, Ellen T. Cheyenne's Historic Architecture. Cheyenne-Laramie County Regional Planning Office, 1985.

Ittelson, Ellen. "Downtown Cheyenne Historic District Amendment." Prepared for Cheyenne-Laramie County Regional Planning Office, 1987.

Kahn, Renee. "Post-Victorian Domestic Architecture: The American Foursquare." The Old-House Journal (February, 1982), 29-32

Larson, T.A. History of Wyoming. University of Nebraska Press, 1965.

Polk, R.L., and Co. Cheyenne City Directories. Polk, R.L., and Co., Publishers, 1917 - 1978.

Writers' Program of the Work Projects Administration in the State of Wyoming. Wyoming: A Guide to Its History, Highways and People. Dr. Lester C. Hunt, Secretary of State, 1941.

United States Department of the Interior  
National Park Service

NATIONAL REGISTER OF HISTORIC PLACES  
CONTINUATION SHEET

Section number 10 (Kendrick Building) Page # 1

=====

VERBAL BOUNDARY DESCRIPTION: The nominated property includes the North 88 feet, Lots 1 and 2, Block 169, Original City of Cheyenne, as surveyed, platted and recorded in Laramie County, Wyoming. This lot is commonly known as 2320 Capitol Avenue, Cheyenne, WY, and measures 132 feet east to west, and 88 feet north to south.

BOUNDARY JUSTIFICATION: The boundaries of the property define the area included in the North 88 feet, Lots 1 and 2, Block 169, Original City of Cheyenne, Laramie County, Wyoming. It constitutes the entire parcel of land that has historically been associated with the Kendrick Building.

United States Department of the Interior  
National Park Service

NATIONAL REGISTER OF HISTORIC PLACES  
CONTINUATION SHEET

Section number Appendix (Kendrick Building) Page # 1  
=====

WILLIAM R. DUBOIS ARCHITECTURAL PLANS  
HOUSED AT ARCHIVES AND RECORDS DIVISION  
WYOMING STATE ARCHIVES, MUSEUMS AND HISTORICAL DEPARTMENT  
Barrett Building  
Cheyenne, WY 82002

COMMERCIAL/INDUSTRIAL BUILDINGS [no date on plan if no date given]

WYOMING

Basin

Carnegie Public Library (1909)  
Luman Hotel

Buffalo

Soldiers' and Sailors' Home (1938)

Carpenter

School Building (1923)

Casper

Vocational High School (1919-20)  
Wyoming General Hospital  
Casper Housing Corporation, "The Goodrich Plan"  
Hennig Hotel (1917)  
Midwest Hotel (1913)

Cheyenne

City-County Jail (1918)  
City-County Building (1920)  
Churchill Grade School (1913)  
Gibson-Clark School (1920)  
Gymnasium Building, High School (1912)  
Johnson School (1923)  
High School Building (1921-22)  
St. Joseph Church (1928)  
Warren Livestock Company Bunkhouse (1927)  
McCord-Brady Warehouse (1912)  
Paxton and Gallagher Warehouse  
Episcopal Church and Parish House of St. Marks (1925)  
School District No. 1 Grade School Building (1911)  
J.J. McIntosh Building (1916)  
Laramie County Poor Farm Addition  
Cal Holliday-Cook Building Alterations (1925)  
Cheyenne Jr. High School Alterations (1925)  
T.H. Olsen Store Building (1918)  
E.T. Bartley Store Building Additions (1927)

United States Department of the Interior  
National Park Service

NATIONAL REGISTER OF HISTORIC PLACES  
CONTINUATION SHEET

Section number Appendix

(Kendrick Building) Page # 2

=====

Southside Community Church (1926)  
T. Dyer Store (1927)  
S. Idelman Building (1926)  
Coliseum Building - New Stairway (1930)  
MacMarr Food Corporation, Ltd. (1929)  
Cheyenne Securities Co. Building (1917 & 1929)  
City of Cheyenne Park Tool House (1926)  
Wyoming National Guard Supply Building  
Sam Shuman Building, Alterations and Additions (1929)  
George Carroll Filling Station (1929)  
Montgomery Ward Store (1929)  
Frank G. Smith Building (1927)  
Percy Smith Mercantile Cleaning Plant Building (1929)  
First English Lutheran Church Parsonage (1935)  
Howard Warehouse (1932)  
Aero Oil Co. Filling Station (1925)  
Atlas Theatre (1907)  
Bishop's Residence (1907)  
Capitol Building [additions] (1938)  
Cheyenne Plumbing Co. (1910)  
Continental Oil Co. Warehouse (1902)  
Cosgriff Store (1931)  
Elk's Home Alterations (1922)  
Horticultural Field Station Laboratory Building (1939)  
Lewis Manewall Store (1909)  
Mayflower Cafe  
Thomas O'Neil Store (1911)  
T.J. Palmer Bakery  
School Bus Garage (1940)  
Corlett School (1940)  
St. Mary's High School (1938)  
Scottish Rite Cathedral  
Sam Stark Store (1922)  
Wintergarden (1931)  
Supreme Court Building (1935-6)  
Tourist Apartment Building (1936)  
U.S. Federal Office Building (1932)  
Warren Live Stock Company (1941)  
Warren Mercantile Company (1940)  
Western Ranchman Wyoming Motel (1940)  
Yoder Building  
Cheyenne Light, Fuel and Power Building  
Warren Apartments  
McCormick Junior High School (1928)

United States Department of the Interior  
National Park Service

NATIONAL REGISTER OF HISTORIC PLACES  
CONTINUATION SHEET

Section number Appendix

(Kendrick Building) Page # 3

=====

Cheyenne Transfer & Storage Company (1929)

Eagles Hall - Aerie #128 (1941)

Lodge IOOF #1 (1930)

Grier Furniture Co. (1911)

Cheyenne Central Fire Station (1931)

Capitol Avenue Theatre (1904)

Harris Furniture Co. (1936)

Plains Hotel (1910)

Deming Building

Cheyenne Apartments (1920)

Salvation Army Building

Wyoming Fuel and Feed Company

Rookery-Conway Apartments

Hewlett Apartments

Chugwater

Swan Land and Cattle Company Headquarters Building (1919)

Cody

Grade School (1937)

Douglas

Grade School (1919)

Baptist Church (1916)

Wyoming State Fair Grandstand (1927)

Unity Temple (1902)

Elk Mountain

Elk Mountain Trading Co. (1932)

Evanston

WY State Hospital (1907-35)

Greybull

Wyoming Gas Company (1938)

Green River

School Building (1920)

Carnegie Public Library (1906)

Guernsey

School District No. 12 Additions (1921)

Guernsey Pharmacy (1929)

F. Burton Store Building

Hillsdale

School Building (1921)

Jackson

Nurses Cottage for St. John's Hospital



United States Department of the Interior  
National Park Service

NATIONAL REGISTER OF HISTORIC PLACES  
CONTINUATION SHEET

Section number Appendix

(Kendrick Building) Page # 4

---

Lander

Cottage for the WY School for Defectives (1920)  
Institution for the Feeble Minded  
Vocational High School (1918-9)  
Wyoming Industrial Institute Chicken House, Dairy Barn, Implement Shed, Hog  
House (1920)  
Church of Holy Rosary (1928)  
Noble Hotel (1925)  
State Training School (1937)

Laramie

University of Wyoming Buildings  
Student Union  
Gymnasium (1923)  
Men's Residence Hall (1927)  
Hoyt Hall (1921)  
Normal School Building  
Women's Hall  
High School Addition (1939)  
School Building (1907)  
Albany County Courthouse (1931-2)  
Connor Hotel Building Additions (1925)  
Balch Building (1904)  
Chaplin Store (1908)  
Elk's Lodge #582, BPOE (1910)  
Municipal Building  
Republican Building  
Masonic Temple (1941)  
Minneapolis Steel and Machinery Co. Office (1920)  
Roach Building (1908)

Lusk

Masonic Temple (1902)

Manville

Hotel for Niobrara Investment Company (1919)

Mountain View

School Building (1938)

Newcastle

Armory Building (1913)

Pine Bluffs

School Building  
School Building  
Pine Bluffs Hotel (1914)

United States Department of the Interior  
National Park Service

NATIONAL REGISTER OF HISTORIC PLACES  
CONTINUATION SHEET

Section number Appendix

(Kendrick Building) Page # 5

=====

Rawlins

High School (1924)  
Pierce and Ryan Building (1928)  
Homer A. France Store (1923)  
Osborn Block Theatre (1923)  
Wyoming Penitentiary (1931)  
Daley Building

Riverton

Penitentiary Farm (1934)

Rock Springs

Carnegie Public Library (1908)  
North Side School Building  
School Building  
Rock Springs National Bank

Sheridan

Branch of WY General Hospital  
Armory Building, Troop B, Wyoming National Guard (1928)

Sunrise

School Building (1916)

Torrington

State Experimental Farm  
Masonic Temple (1916)  
St Joseph's Orphanage (1935)

Wheatland

High School (1913)  
Masonic Temple Lodge 16 AF & AM (1927)  
Grease Spot Filling Station Additions (1930)

Wind River Indian Reservation

St. Michael's Mission (1918)

Worland

Wyoming State Reformatory (1922-3)  
Emmer Products Company Building (1915)  
School Building (1916)

COLORADO

Carr

Alterations to School building (1930)

Eaton

Carnegie Library (1910)

Hereford

School Building (1921)

United States Department of the Interior  
National Park Service

NATIONAL REGISTER OF HISTORIC PLACES  
CONTINUATION SHEET

Section number Appendix

(Kendrick Building) Page # 6

=====

NEBRASKA

Bushnell

School Building (1916)

A.R. Thomas Store

Kimball

Grade School (1915)

First Methodist Episcopal Church (1916)

US Post Office (1920)

Boyle Store (1916)

Sidney

Leo E. Osborn Office and Store Building (1917)

L. Newbauer and J.J. McIntosh Store (1916)

Otto Hink, Jr., Store (1916)

Brewer Hotel and Cafe (1918)

Gus Linn Store (1919)

Theatre Building (1918)

SOUTH DAKOTA

Camp Crook

Bank and Store (1918)

IN ADDITION, THE DIVISION HAS DUBOIS PLANS  
FOR OVER 100 RESIDENCES.

UNITED STATES DEPARTMENT OF THE INTERIOR  
NATIONAL PARK SERVICE

NATIONAL REGISTER OF HISTORIC PLACES  
EVALUATION/RETURN SHEET

REQUESTED ACTION: NOMINATION

PROPERTY NAME: Beatty, Charles L., House

MULTIPLE NAME:

STATE & COUNTY: WYOMING, Laramie

DATE RECEIVED: 5/30/90      DATE OF PENDING LIST: 6/12/90  
DATE OF 16TH DAY: 6/28/90      DATE OF 45TH DAY: 7/14/90  
DATE OF WEEKLY LIST:

REFERENCE NUMBER: 90001001

NOMINATOR: STATE

REASONS FOR REVIEW:

APPEAL: N DATA PROBLEM: N LANDSCAPE: N LESS THAN 50 YEARS: N  
OTHER: N PDIL: N PERIOD: N PROGRAM UNAPPROVED: N  
REQUEST: N SAMPLE: N SLR DRAFT: N NATIONAL: N

COMMENT WAIVER: N

ACCEPT     RETURN     REJECT    6/28/90 DATE

Entered in the  
National Register

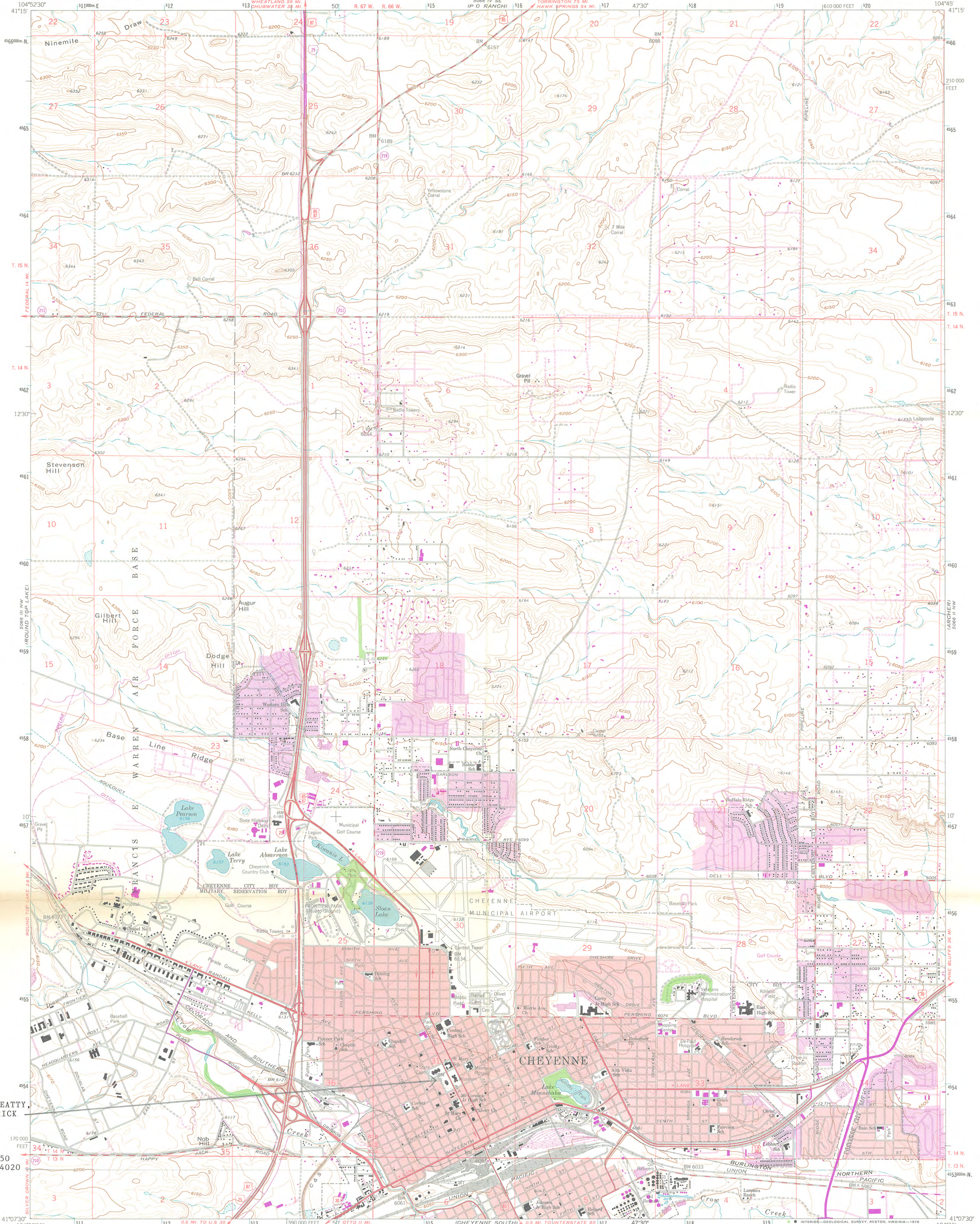
ABSTRACT/SUMMARY COMMENTS:

RECOM./CRITERIA \_\_\_\_\_  
REVIEWER \_\_\_\_\_  
DISCIPLINE \_\_\_\_\_  
DATE \_\_\_\_\_

DOCUMENTATION see attached comments Y/N see attached SLR Y/N

UNITED STATES  
DEPARTMENT OF THE INTERIOR  
GEOLOGICAL SURVEY

CHEYENNE NORTH QUADRANGLE  
WYOMING-LARAMIE CO.  
7.5 MINUTE SERIES (TOPOGRAPHIC)  
NE/4 CHEYENNE 15 QUADRANGLE



CHARLES L. BEATTY,  
HOME / KENDRICK  
BUILDING

UTM ZONE 13  
EASTING 515150  
NORTHING 4554020

Mapped, edited, and published by the Geological Survey

Control by USGS and NOS/NOAA

Planimetry by photogrammetric methods from aerial photographs taken 1960. Topography by planetable surveys 1948. Revised 1961

Polyconic projection. 1927 North American datum

10,000-foot grid based on Wyoming coordinate system, east zone 1000-meter Universal Transverse Mercator grid ticks, zone 13, shown in blue

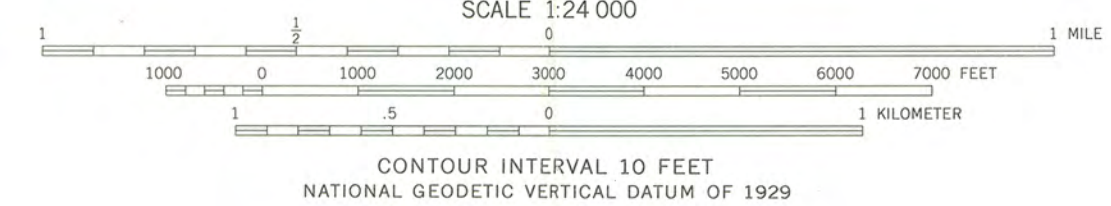
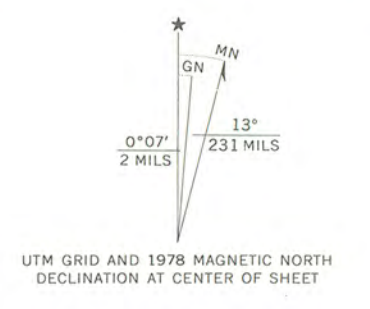
Fine red dashed lines indicate selected fence lines

Red tint indicates areas in which only landmark buildings are shown

Revisions shown in purple compiled from aerial photographs taken 1970 and 1976. Map edited 1978.

This information not field checked

Purple tint indicates extension of urban areas



CONTOUR INTERVAL 10 FEET  
NATIONAL GEODETIC VERTICAL DATUM OF 1929



ROAD CLASSIFICATION

Heavy-duty	Light-duty
Medium-duty	Unimproved dirt
Interstate Route	U.S. Route
Slate Route	

CHEYENNE NORTH, WYO.  
NE/4 CHEYENNE 15 QUADRANGLE  
N4107.5-W10445/7.5

1961  
PHOTOREVISED 1970 AND 1978  
AMS 5066 III NE-SERIES V874

THIS MAP COMPLIES WITH NATIONAL MAP ACCURACY STANDARDS  
FOR SALE BY U. S. GEOLOGICAL SURVEY, DENVER, COLORADO 80225, OR RESTON, VIRGINIA 22092  
A FOLDER DESCRIBING TOPOGRAPHIC MAPS AND SYMBOLS IS AVAILABLE ON REQUEST

MIKE SULLIVAN  
GOVERNOR



# Wyoming State Archives, Museums & Historical Department

DAVID KATHKA, Ph.D.  
DIRECTOR

BARRETT STATE OFFICE BUILDING

CHEYENNE, WY 82002

(307) 777-7519

May 23, 1990



**NATIONAL  
REGISTER**

Mr. Jerry Rogers  
Keeper of the National Register  
USDI, NPS  
P. O. Box 37127  
Washington, D.C. 20013-7127

Dear Mr. Rogers:

Please find enclosed the National Register of Historic Places Nomination Form for the Charles L. Beatty House in Cheyenne, Wyoming. All of the necessary federal requirements for nominating this property have been fulfilled. The nomination is printed on archivally stable paper and the photographs have been labeled with a number one pencil.

As you may be aware, the State of Wyoming is celebrating its Centennial this year. The Beatty House, also known as the Kendrick Building, functions as a state office building and is located directly across the street from the State Capitol, a National Historic Landmark. The Wyoming Council on the Arts occupies the structure and did the nomination as one of its major centennial projects. There is a special ceremony planned for July 10, Statehood Day. We expect tens of thousands of visitors to the Capitol Complex and hope for a chance to announce the listing of the Kendrick Building in the National Register during the festivities.

We realize how busy your staff is, but I would very much appreciate it if we could be notified just as soon as a decision has been made regarding this nomination. While it may be pushing at the edge of the forty-five day limit just a bit, it is very important to the Wyoming Council on the Arts and its consultants. Since the Wyoming Council on the Arts is now part of the Parks and Cultural Resources Division I head, it is also personally important.

I thank you for your consideration of this matter and any assistance you can provide. Please do not hesitate to call Sheila Bricher-Wade, Survey and Registration Program Manager, if you or your staff have questions.

Sincerely,

A handwritten signature in black ink, appearing to read "David Kathka".

David Kathka  
State Historic  
Preservation Officer

DK:clo

Enclosures